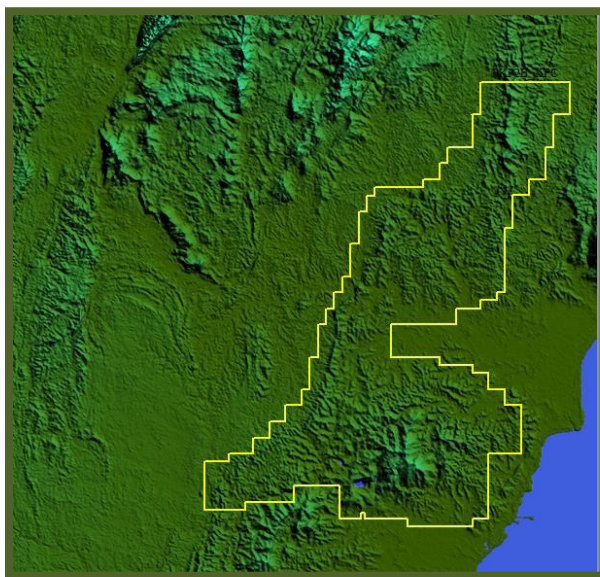


COMPANY NEWS & ANNOUNCEMENTS

Thursday, 3 November 2011

CBM evaluation of the Sangatta and Tabulako Blocks for EMP have been completed

CSGEPS has completed CBM evaluation and assessment of the Sangatta and Tabulako Blocks (Kalimantan, Indonesia) for Energi Mega Persada (EMP). EMP is ramping up its CBM activities in Indonesia targeting commercial production in two years. CSGEPS has been providing technical expertise to EMP for prospectivity analysis, Exploration Program Management and Drilling.



Era	Period	Epoch	Age (My)	Rock Units	Description
Quaternary	Holocene		0.01	Qa	Alluvial Deposit (Qa) Cobble, Pebbles, Sand, Silt and Plant Remains
			1.3	Tpkb	Kampungbaru Formation (Tpkb) Quartz Sandstone with Interstratified Claystone, Siltstone, Polymic Conglomerate Coal & Iron Oxide
Cenozoic	Pliocene		5.3	Tmbp	Balikpapan Formation (Tmbp) Quartz Sandstone and Claystone with Interstratification of Siltstone, Shale, Limestone and Coal
		Late	11	Tmnp	
		Middle	16.3	Tmnr	
Tertiary	Eocene	Early	34.5	Tmpe	Sangatta Formation (Tmpe) Basaltic Andesite lens, Tuff, volcanic Breccia and Agglomerate
		Late	23.7	Tomp	
	Oligocene	Early	30	Toty	Pulubaling Formation (Tomp) Quartz Sandstone and Greywacke, Claystone with Limestone Interstratification, Tuff and Coal
		Late	36.5	Toty	Tuya Formation (Toty) Silt, Claystone with Interstratification of Limestone
Eocene	Late	50	Tet		
	Early	57.8	Tet	Sangang Formation (Tet) Interbedded of Sandstone, Claystone & Siltstone interstratified by Limestone, conglomerate & Coal	